

## **Fire Safety Plan and Evacuation Plans -Rental User**

As a facility rental user, please be advised of the following information as it pertains to you, your group and the facility's Fire Safety Plan:

- Make note of all locations of fire pull stations and fire extinguishers
- Make note of all fire exits.
- Do not block exits. All exits must be kept clear at all times
- Prior to start of event, please inform occupants/guests that in the event of fire, they must evacuate from the nearest exit and remain on site until otherwise directed by the Fire Department.
- Know your participants. You may need to discuss evacuation procedure and make a plan to assist at-risk individuals.

### **Evacuating At-Risk Individuals:**

At-risk individuals are persons who require assistance to evacuate in an emergency. It could be anyone who has reduced mobility, a speech, hearing or visual impairment, or cognitive limitation - regardless of whether or not these conditions are temporary or permanent. It is important that the at-risk individual communicates their needs and limitations to you or the facility staff. Also, it is important that they familiarize themselves with the building. And know the locations of areas of refuge or safe holding areas, evacuation devices, fire-rated doors and accessible exit routes. The following are important considerations:

- Does the building have appropriate notification systems for this individual?
- Do they use assistive devices? Do they require an evacuation device? Do they have a preferred lift or carry method, if required?
- Will they be spending considerable amount of time in various locations in the building? How will they be found in the event of an emergency?

- Does the individual require a buddy system? A buddy system is where a friend or volunteer provides assistance to them if they cannot evacuate independently.

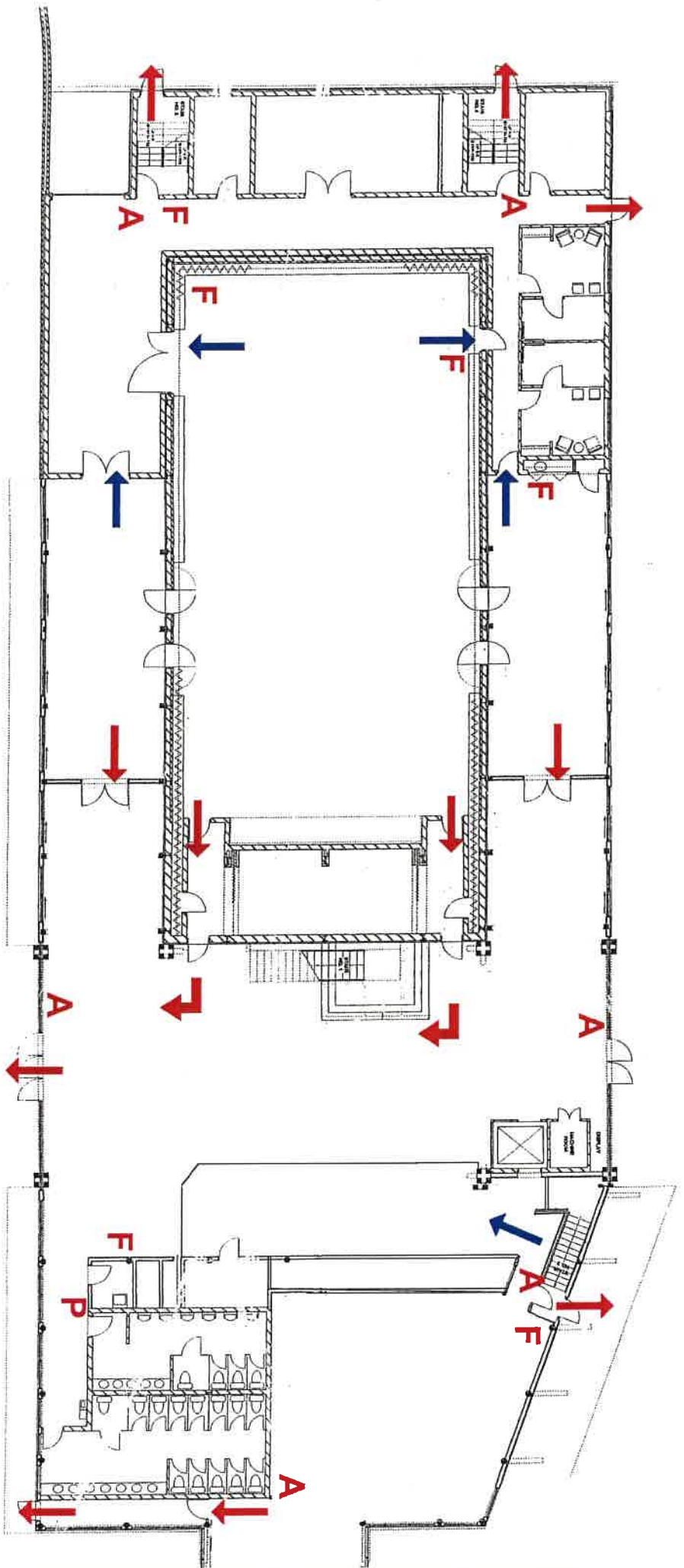
These considerations are very important to convey to you; to facility staff and the emergency first responder.

### **Upon discovery of fire or hearing the alarm:**

- Remain Calm
- Leave the fire area immediately
- Close doors behind you
- Sound the fire alarm and call the Parry Sound Fire Department (911) and give the facility name and complete address
- Do not use the elevator
- Leave the building immediately via the nearest fire exit
- Once outside, report to the fire department.

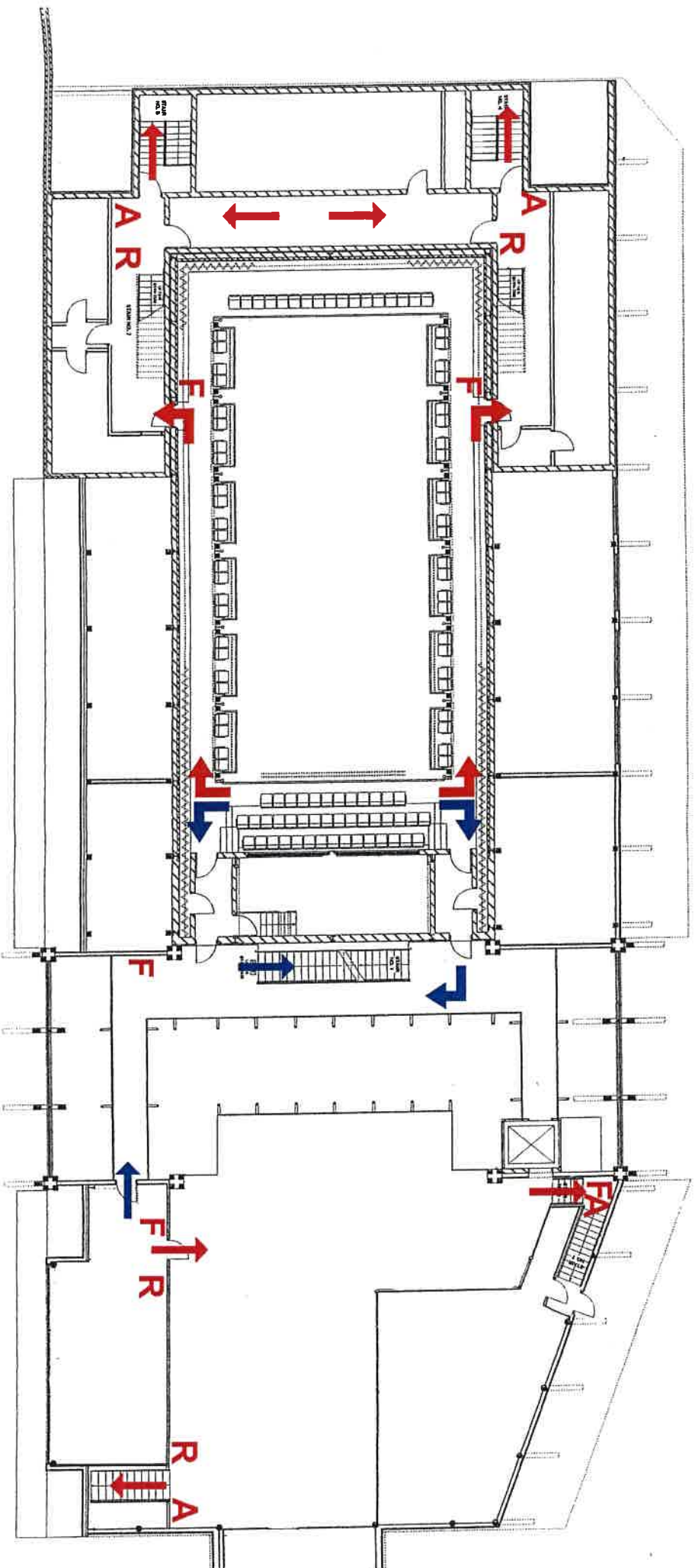
If you require the Fire Safety Plan or this document in an alternate format, please contact Stockey Centre Staff.

# Emergency Evacuation Plan Ground Floor



- Primary Exit
- Secondary Exit
- A** Fire Alarm Pull
- F** Fire Extinguisher
- P** Emergency Panel
- R** Area of Refuge 'Protect in Place'  
You Are Here

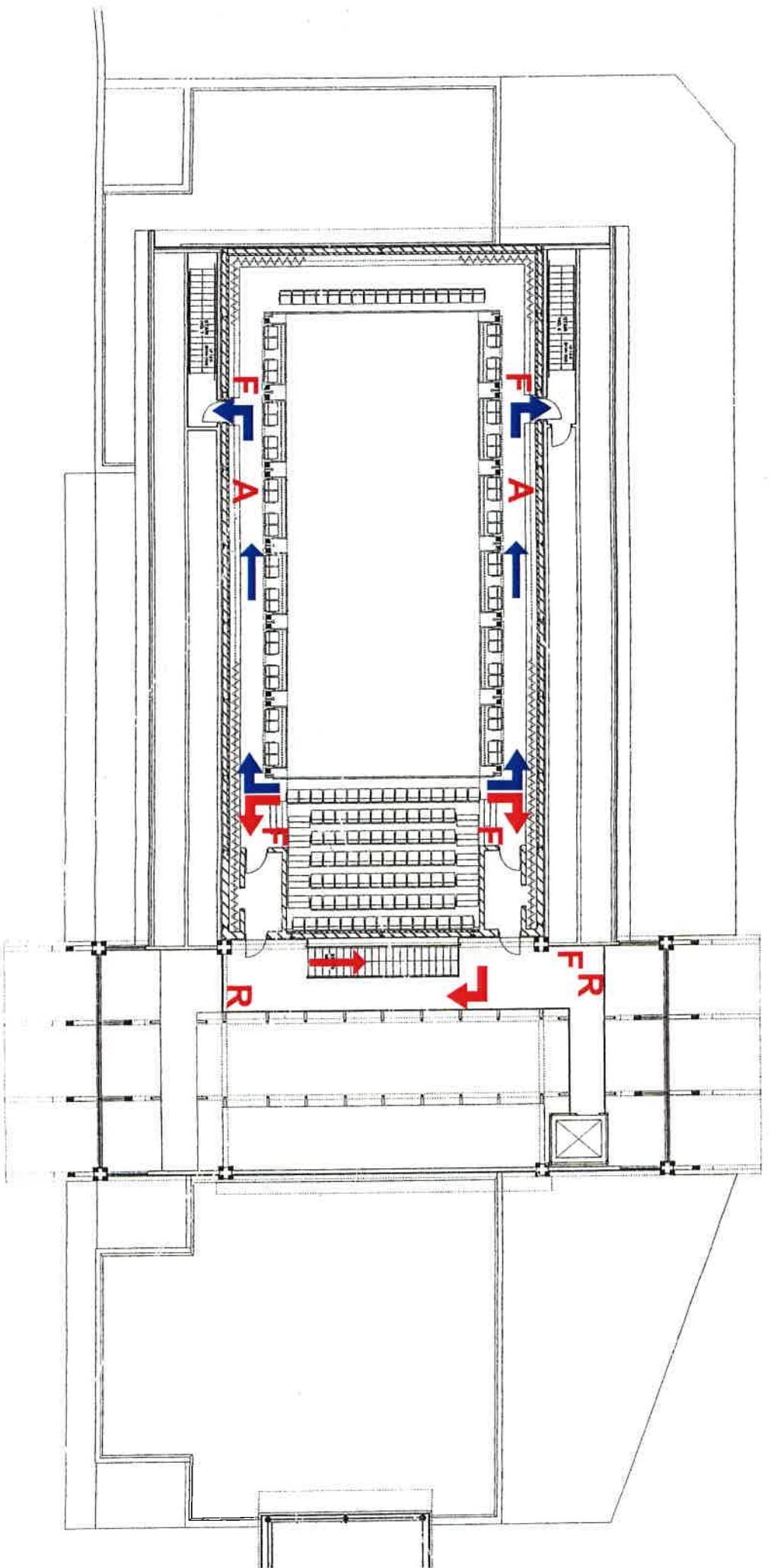
# Emergency Evacuation Plan Second Floor



→ Primary Exit  
→ Secondary Exit

A Fire Alarm Pull  
F Fire Extinguisher  
R Area of Refuge 'Protect in Place'  
You Are Here

# Emergency Evacuation Plan Third Floor



→ Primary Exit

→ Secondary Exit

A Fire Alarm Pull

F Fire Extinguisher

R Area of Refuge 'Protect in Place'

You Are Here



# **Facility Accessibility Design Checklist**

## **Facility: Charles W. Stockey Centre**

### **Parking**

- Two (2) accessible parking spaces directly across from building entrance

### **Accessible Routes, Paths and Corridors**

- Entrance, routes and corridors are wide and accommodating.

### **Entrances and Exits**

- Power door operators at the entrance and exit
- Large and open lobby
- Exits clearly marked

### **Interior**

- Industrial capacity elevator. Clearly marked elevator buttons with braille characters and standard symbols
- Service Counter has lowered accessible ledge
- Low mounted water fountain
- Slip-resistant flooring in lobby.
- Handrails on carpeted stairwells with contrasting colour to the environment.
- 2nd and 3rd Floor levels are carpeted

## **Washrooms**

Main floor:

- Hands free entrance
- Accessible washroom stalls.
- Identified with universal signage.

## **Emergency Features**

- Flashing "EXIT" signs
- Audible alarms
- Automatic Elevator shut off
- Emergency lighting in place

## **Accessible Features of the Stockey Centre Performance Hall**

- Hearing Assistive devices available upon request
- Dedicated floor level accommodation for Wheelchair or other mobility device users
- Upper levels accessible by elevator

## **Accessible Features of the Bobby Orr Hall of Fame**

- Open and spacious floor level
- Upper floor accessible by elevator
- Most games operated by touch screens at an accessible level